

# Model 3/Y Ultra Mini Screen Display Installation Manual

## Note:

- 1.The installation instructions may differ slightly from the actual operation. If there are any differences,please follow the actual situation or contact us.
- 2.Warning: Please do not disassemble any part by yourself,any improper operation will not be covered by our warranty.



installation tutorial video

## Aftersale Contact:

phone/whatsapp : +86 130 4421 9654

Email: support@hansshow.com

## Working Hours (UTC+8):

9:00AM - 18:30PM (Monday to Sunday)

Please leave a message at other times



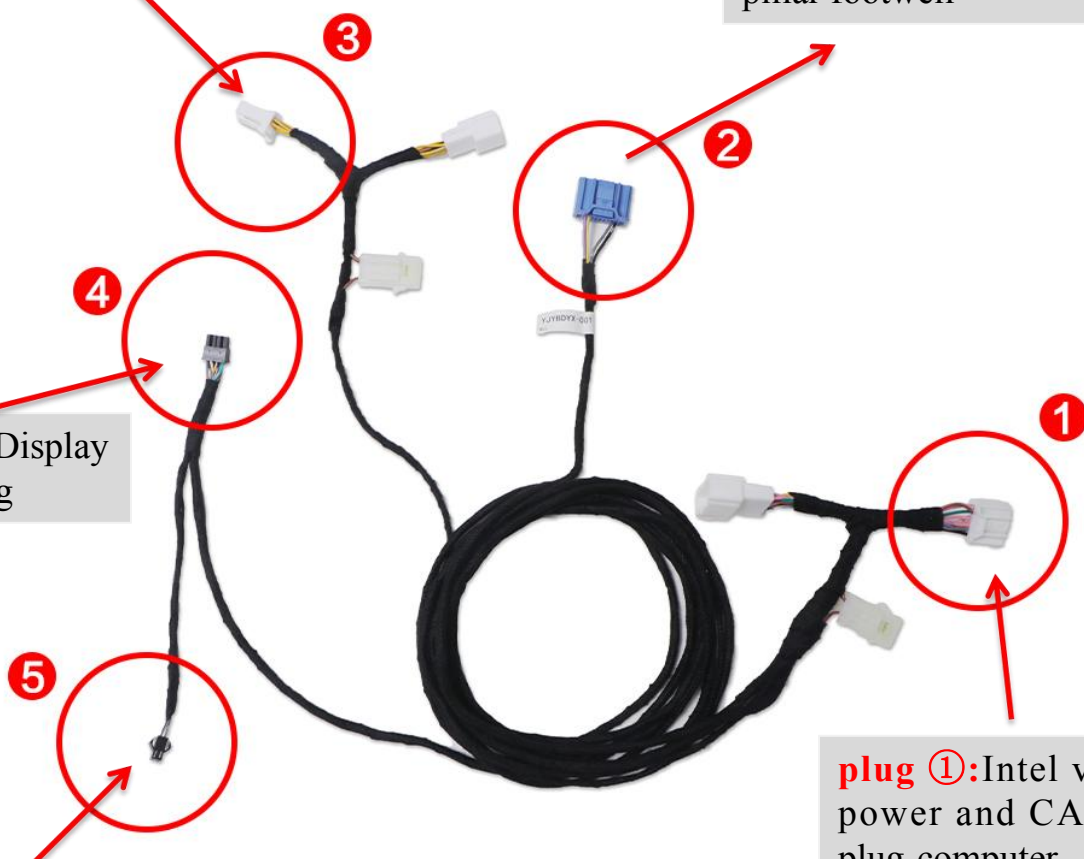
**plug③** : AMD version  
power plug-right door A  
pillar footwell

**plug ②** : AMD CANBUS  
adapter cable-right door A  
pillar footwell

**plug ④** : Display  
power plug

**plug ①**:Intel version  
power and CANBUS  
plug-computer

**plug ⑤**: spare upgrade cable



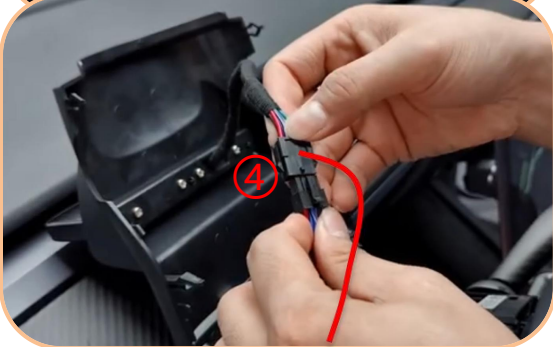
Intel Version



1. Slide the steering wheel to the bottom and then turn left to move the steering wheel to the the outermost position



2. Pry up the cover with a pry board



3. Then pry the harness **plug ④** from the upper cover plate of the driver's footwell and pull the harness to the upper part according to the instructions in the picture and plug it into the screen



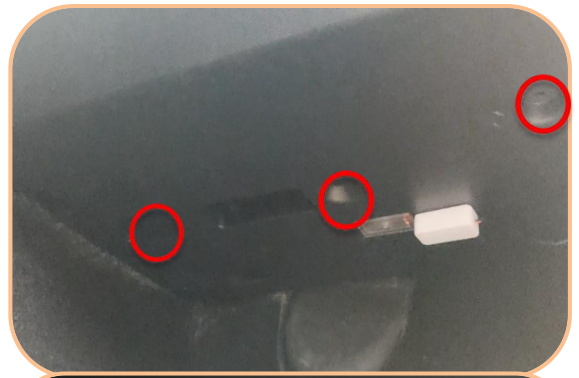
4. Install the cover



harness wiring diagram



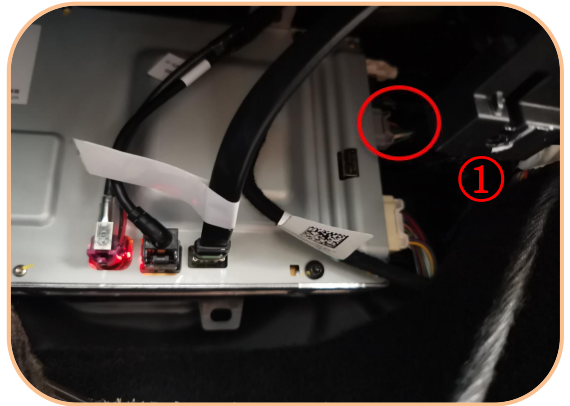
5. Pull harness ① to the side of passenger's footwell



6. Remove the upper cover of the passenger's footwell



7. Remove the side cover of the passenger's footwell



8. Find the second gray plug of the host above the passenger's footwell and connect it to **plug ①**



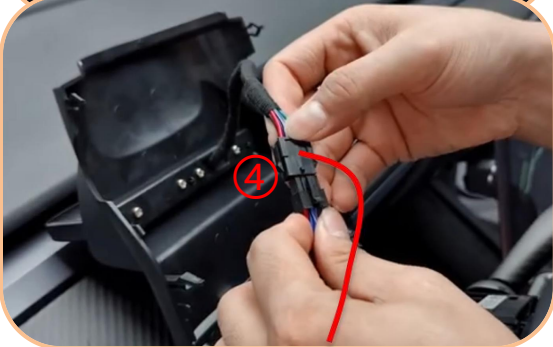
AMD Version



1. Slide the steering wheel to the bottom and then turn left to move the steering wheel to the the outermost position



2. Pry up the cover with a pry board



3. Then pry the harness plug ④ from the upper cover plate of the driver's footwell and pull the harness to the upper part according to the instructions in the picture and plug it into the screen



4. Install the cover

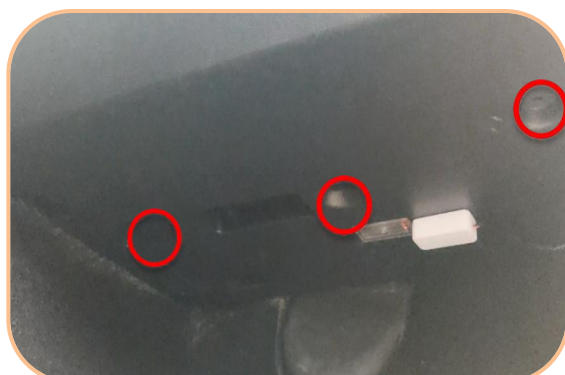


harness wiring diagram

# Model 3/Y Ultra Mini Screen Display Installation Manual



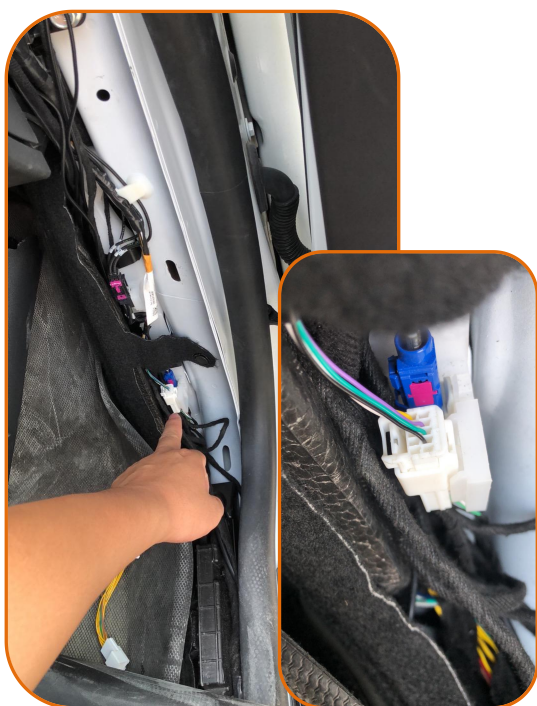
5. Pull harness ②/③ to the side of passenger's footwell



6. Remove the upper cover of the passenger's footwell



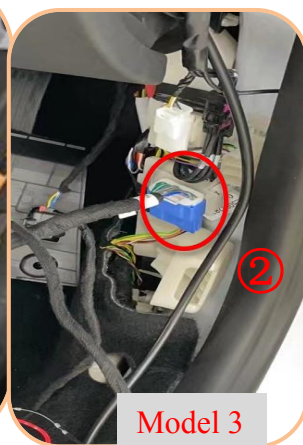
7. Remove the side cover of the passenger's footwell



8. Connect the plug ③ to the white plug under the A pillar of the front right seat



Model Y



Model 3

9. Connect the plug ② to the blue plug under the A pillar of the front right seat